



This Issue

- Mary Tabar Workshop.....Sept. 7th
- Cindy Grisdela Workshop.....Oct. 18th
- Philanthropy Workshop.....Nov. 9th
- WQ Officer & Chairman Reports
- Call for Entries
- Neighborly Guild Calendar
- WQ Member Articles



Next Quarterly Meeting

Saturday, October 19, 2019

Cindy Grisdela

“Playing With Color”

**St. Andrew's Lutheran Church,
11555 National Blvd,
Los Angeles, CA 90064.**



Up Coming Workshops & More



- **Mary Tabar** workshop “Water Color Strip Quilt” **Saturday, September 7th** is now open for registration. Hope you can make it. Once your strata is completed then it will be fun to cut it up and design your quilt. Lots of options. You could even use Christmas fabrics and have one top ready ahead of the holiday season. See you there, Pat and Linda
- Registration for **Cindy Grisdela** “Artful Improv” **Friday, October 18th** workshop is open. Check out her awesome website...
- Registration forms for classes and membership renewal can be downloaded from the Westside Quilters website.
- Road2CA special SCCQG exhibit details on pages 12 & 13
- WQ **Philanthropy Day November 9th!!** Mark your calendars.
- Where are we meeting??? Where is the class?? If there is a change in meeting location you will get an email with the details, for circumstances beyond our control WQ’s have become nomadic! Loved our class in the 1914 Santa Monica Bay Woman’s club building.



PRESIDENT'S MESSAGE

Try something new this month!

Maybe a new technique, a new pattern, new stitch on your sewing machine or perhaps some paint on your quilt. So many things that you have admired on quilts you have seen at shows.

It is a good time to experiment.

It may feel scary but give it a try.

The concept was brought to life this August in Esterita Austin's workshop, 'Sheer Faces'.



Like most of the workshop participants I had never thought of using sheer fabrics in a quilt. I was on a new path having to trust our experienced teacher.

Step by step I followed her directions, cutting bits of fabric and deciding the best place to put each bit to form a portrait. We were concerned with value not color. It did take courage and trust but I was rewarded with the satisfaction of trying a new technique that helped me grow using sheer fabrics.

Thanks to our Program Chairs, Linda Lardy and Pat Karasick for our innovative and challenging programs.

Roberta Walley
President Westside Quilters



shutterstock - 81319225





Westside Quilters presents a workshop with

Mary Tabar Workshop

'Water Color Strip Quilt'

Saturday, September 7, 2019
9:30 A.M. -3:30 P.M.

Westchester Municipal Building
8740 Lincoln Blvd. Los Angeles, CA 90045

Workshop fee: \$50.00 for Westside Quilt members,
(\$60.00 for non-members)

Class description: Water Color Strip Quilt

This lovely strip quilt is made from only three floral fabrics. Plus border fabric. Class participants will make different strip stratas and cut half square triangles to design and create their own version of this quilt. There are dozens of layouts possible.

Mary calls the quilt watercolor because if you use floral prints, the stripes blend together to give a watercolor effect. You can also use solids. It is important to think in values, light, medium and dark.

Supply list follow below and at WQ website www.westsidequilterslosangeles.org

Please note that there is **HOMEWORK** for this class: Mary is requesting that you come to class with your strata already put together, so that you will have more design time.

Biography

Mary Wood Tabar was born in Hannibal, Missouri where her mother was employed and trained by Singer Sewing Machine Company. Since the age of four she has been working with sewing machines. By six years of age she was doing crewel embroidery and other hand sewing projects. Raised with Midwest working ethics and family values, these qualities helped to foster appreciation, patience and a simple approach to life.

She graduated from [Truman State University](http://www.truman.edu) in Kirksville, Missouri with a Bachelor of Science in Industrial Technology, and a minor in Graphic Arts, and later received her Teaching Credential from [California State University at San Marcos](http://www.csu-sanmarcos.edu). She has had a variety of sewing experiences from making Madam Alexandra antique doll clothes in New York City to making Renaissance costumes in San Diego for people such as Mick Fleetwood. She lives in San Diego with her husband and two daughters.



Continues on next page.....

Supply List:

This quilt is for a confident beginner. I call it watercolor because if you use floral prints, the stripes blend together to give a watercolor effect. You might have seen or made a watercolor quilt with 2" squares. What we are working with is using the value of light, medium and dark fabrics. I have used solid fabrics (not floral) and it gives more of a contrast to your piece. You can use several light, medium and dark fabrics or just use **three** fabrics, plus a border or focus fabric for the borders.

- Light Floral fabrics, 1 ½ yds. Fabric needs to be at least 43" in length.
- Medium Floral fabrics, 1 ½ yds. Fabric needs to be at least 43" in length.
- Dark floral fabrics, 1 ½ yds. Fabric needs to be at least 43" in length.
- Dark background fabric, 2 yds. For borders and added squares.
- Spray sizing, spray on fabric before cutting into 1 ½" strips.
- 12" ½ plastic square ruler for cutting
- Basic sewing supplies, and sewing machine. I like an accurate 1/4" sewing foot for piecing the strips. (Do not sew a scant 1/4" seam) Rotary cutter and ruler to cut exact 1 ½" strips.
- Flannel sheet or the back of a plastic tablecloth for design board.

Homework

Cut 20 strips from light, medium and dark fabrics before class and you will have more time for designing. Sew 1 strata of (cut strips) one light to one medium (5 pairs) 1 strata of light to one dark (5 pairs) and 1 strata of medium to dark (5 pairs). Each strata has 10 strips. Iron to the dark strip after sewing each pair. This step will give you more time in class to design your quilt. The quilt needs **two sets** of these three types of stratas. You will get more design time, if you sew all **six** stratas.

Again do not sew a scant 1/4" seams. We want to cut your stratas into four squares.

This quilt above is 62" x 62" and it uses only three fabrics plus the border.

Any questions? You can email me directly at pk@afewgoodideas.com
Or leave a message on my cell phone 213-494-7586

Program co-chairs Pat Karasick and Linda Lardy

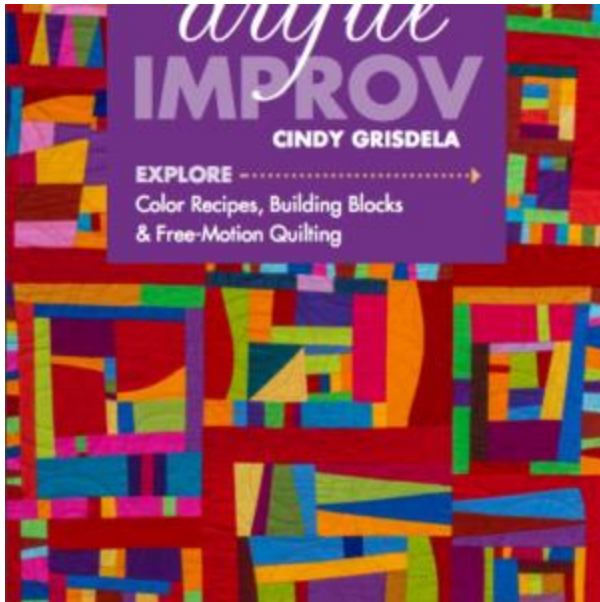


Other Quilts by Mary Tabar





WESTSIDE QUILTERS



Westside Quilters presents a workshop with

Cindy Grisdela

"Artful Improv - Permission to Play!"

Friday, October 18, 2019

9:30 am – 3:30 pm

**St. Andrew's Lutheran Church,
11555 National Blvd,
Los Angeles, CA 90064.**

Workshop fee: \$85.00 for all

Learn to create your own original quilts with no pattern using improvisational piecing techniques. Students will learn to let go of the “rules” and piece blocks in an intuitive, free form fashion. We will explore contemporary improv blocks, improv circles, and angled stripes, plus insets and curved strips. Use strips and scraps to add interest and make your design your own. There’s no measuring or precise cutting and each quilt will be unique.

We will discuss color choices and using simple design principles to create an original dynamic composition. The extended class goes into these ideas in more depth, as well as discussing quilting options and alternative finishing techniques.

Basic sewing skills and a machine in good working order necessary. Best for intermediate to advanced quilters ready to take the next step to creating original designs. The quilt shown is an example of a quilt I’ve made using the techniques taught in this class.





PHILANTHROPY

**Mark your calendars for Saturday, November 9th
Philanthropy workshop!!!**

Philanthropy Day.....

Saturday, November 9th
9:30 A.M. – 3:30 P.M

**LAPD - West Traffic /West Bureau Building,
4849 W. Venice Blvd.,
Los Angeles, CA 90019.**

Hello WQ members,

Thanks to everyone who brought scrap strips to the quarterly meeting – we're off to a great start! It certainly looks like this will be a fun and productive project for us to work on now and at the **Philanthropy Workshop on November 9th**. The finished strip sets should measure 7 x 20 and can be as scrappy as you like!

The **Annual Fabric Sale** will be at the quarterly meeting on **October 18th** at St Andrew's Lutheran Church. This is always a great reason to look through your stash and donate any extra fabric or quilting supplies to a good cause, and of course a perfect excuse to acquire something new on the day.....

If you have any questions, please email us at Philanthropy@WestsideQuiltersLosAngeles.org.

Thank you!
Lisa Drew, Virginia Marshall, and Nancy Kawahara, Philanthropy Co-Chairs



Leadership.....

Tidying Up

I don't know about you, but I love looking at photographs of other quilters' studios. There is something fascinating about seeing those neat and tidy work spaces, shelves or bins full of carefully folded fabric assorted so beautifully by color and pattern, expansive design walls waiting for the next creation (which will obviously be wonderful, having been created in that exquisite space...). But then I have to ask myself: does their studio *really* look like that when they are working on a project?

I consider myself fortunate to have a whole room, albeit a fairly small one, devoted to my quilting; but I guarantee you it never looks like those photographs I see. Papers are piled up, fabric always escapes from the closet where I store it and ends up strewn just about everywhere, and over there on the ironing board is a ruler that somehow didn't find its way back to the rack where it belongs. And that is on a day when I am NOT in the middle of a project!

Take, for example, the wall closet filled with shelves where I store my fabric. I am not compulsive about a folding method (Marie Kondo would never approve!), but I do strive for some semblance of order. But if I am working on a project, pulling various fabrics and auditioning possible choices, the "semblance of order" sometimes looks more like semi-organized chaos.

When I finish a project and am not sure what to do next, I often find that tidying up is in order. The myriad spools of thread get put away, the ironing board is cleared of clutter, and I can actually see the entire top of my cutting table. The never-ending battle, however, is the fabric. At least a couple of times a year I try to tackle that closet shelf by shelf, color by color, removing the fabric, refolding, resorting, and sometimes rediscovering some treasured piece I had forgotten all about (where was it when I needed it????) or finding new combinations that work. In the process I also find pieces of

fabric I KNOW I will never use. Those go in the pile to bring to the guild's fabric sale, which is coming up in October.

For me tidying up is not about achieving Marie Kondo/photo opportunity style perfection. Like the writer Austin Kleon, I see tidying my workspace as exploring, about hoping to chance on something (or a combination of somethings) that will inspire my next project. And then how nice it is when my quilting room is tidy enough to start anew. Once again I can pile things up, scatter fabric about, and enjoy both my organized chaos and the process of creating a new quilt.

Barbara Marom-Pollack
Vice President

MEMBERSHIP

We currently have 72 members and I will be sending out your Westside Quilters information shortly.

Luann Jaffe
Membership Chairperson

If you have any questions regarding membership please contact me either through the web or luannjaffe42@gmail.com



What Machine Quilters REALLY Think



TREASURER

Karynn Dittmar, Treasurer

OPENING BALANCE AS OF 6/1/19		8439.78
INCOME		
Membership Dues / Donations	2850.00	
Workshop Fees	1925.00	
Bank Adjustment	0.00	
Guest Fees	0.00	
Fabric Sale Fundraiser	0.00	
Amazon	21.69	
TOTAL INCOME		4796.69
EXPENSES		
Workshop Expense	3376.72	
General Meeting Expense	0.00	
Charitable Contributions	0.00	
Administrative Expenses	0.00	
Mileage reimbursement	262.00	
SCCQG Insurance	0.00	
Website	220.25	
PO Box Rental	154.00	
Philanthropy / Ed. Expense	0.00	
Printing / Promotion / Admin.	0.00	
Square Up Fees	25.02	
Government Fees	0.00	
TOTAL EXPENSE		4037.99
NET INCOME		758.70
CLOSING BALANCE as of 8/29/19		9198.48



Londre, Patti 9/6
 Marshall, Virginia 9/10
 Nord, Tina 9/10
 Marquez, Julie 9/14
 Sharpe, Nancy 9/17
 Barker, Betsy 9/21

Easy Money for WQ:

We want to remind you that Amazon will pay Westside Quilters 0.5% of purchases as an eligible charitable organization. When you log in to your Amazon account, please select Westside Quilters as your charity in Amazon Smile. If you received an email stating that you need to select a new charity since Westside Quilters had not supplied their bank information update, please check to see if you need to register again. The situation has been resolved.

If you have any problems, please contact Karynn Dittmar, Treasurer.



WEBSITE:

All the photos from our August quarterly meeting featuring Esterita Austin including Quilters Showcase Quilts have been added to the Westside Quilters website at www.westsidequilterslosangeles.org.

The Programs Brochure for 2019-20 handed out at the last meeting had a date error. This has been corrected in the version that you can download and print from the home page of the website. Membership Renewal forms and Workshop Registration forms are also available to print out.

Sally Wright, Website Manager



To Press or Not to Press, that is the Question

Thank you to all who participated in last month's informal survey. It seems that Westside Quilters are divided in half, half use steam, half a dry iron. I have read that if you use your iron on dry, your iron will have a longer lifetime.

If you are in the market for a new iron, you might be interested in our favorite irons. Actually, there was a tie between those of you who prefer Oliso (does little pushups on your ironing board) and Rowenta. Panasonic brand came in third.

Program Co-chairs
Pat Karasick and Linda Lardy

WORKSHOP REGISTRATION

First, please email your intent to attend a workshop to: Programs@WestsideQuiltersLosAngeles.org at the **WQ** website, choose *Calendar* and scroll down to individual workshops. See the link to the Workshop Registration Form (which you can fill in on-line and then print) and the supply list. **See the workshop no-refund policy (substitutions allowed) shown on the Workshop Registration Form.**

WQ will hold your space at the workshop for 14 days to allow time to mail Registration Form and payment to the WQ post office box. For last-minute registrations, contact the Program Chair ASAP. **Credit cards/debit cards now accepted.** Non-members pay a \$15.00 surcharge. Supply lists for all classes can be found on the Calendar page at www.WestsideQuiltersLosAngeles.org. The class sessions are from 9:30am to 3:30pm.

Types of Headaches

Migraine



Hypertension



Quilt seams don't match up.

Stress



Calls for Entry Special Opportunity...

This month I'd really like to feature the **Southern California Council Exhibit celebrating the 25 year anniversary of Road to California**. If you've ever wanted the satisfaction of seeing your quilt hanging at Road this is a great opportunity. If you follow the rules of entry you will have an excellent chance of getting that lovely acceptance email! The quilt needs to be 32" W X 36" H. It has to be inspired by a class you took at Road, use fabric or thread or a pattern you purchased at Road or be inspired by a pattern or book you purchased at Road. That's a pretty easy bar to make. It can be an art quilt, but it could also be a traditional or modern quilt made from that charm pack or layer cake you bought a few years ago and never used. A simple pattern and there you are! It's not King Size! You can do it. We would love to see lots of WQ members represented. I'm working on my entry as we speak! If this is your first try at entering a big show, this is a great opportunity to get your feet wet. The Call for Entry requirements and the entry form are here in the Newsletter and also available for download on the home page at:

www.westsidequilterslosangeles.org . The deadline for postmarked entry is November 1st.

Sally Wright

Calls for Entry

For some great information from a veteran on how to get your work shown see this blog entry from Sue Bleiweiss <https://suebleiweiss.blog/2018/06/14/getting-your-work-out-there/>

I also recommend this blog post from Lyric Kinard on how to choose venues to display your work - <https://lyrickinard.com/2019/05/showing-your-work-choosing-venues/> In fact, there is a whole series of blog posts on getting your work out there that is well worth your time.

Continuing our notifications for ways to display your quilts and textile pieces to a wider audience... Entering shows is not difficult, but to begin here are a few guidelines:

- Always make sure you read everything in the call including the calendar, requirements, rules, etc. Especially the rules! Will save headaches and disappointment later on.
- Keep a record on your entries so you won't be caught with a quilt needing to go two places at once. Having to remove a quilt from a show or exhibit because you misread the exhibition dates is a no-no. Ask me how I know...
- Having a great photo of your quilt - straight on, in focus, not on a bed or held up showing hands and feet, super important. There is lots of great info on quilt photography on line. Google!
- Don't be intimidated or depressed by a rejection! There are lots of different reasons why a quilt doesn't fit into a specific show. It is usually not because your quilt is bad!

The calls below are just a sample of the many opportunities out there. For more search "Fiber Art Calls for Entry" or "Quilt Calls for Entry"

Road to California Contest Entry is now open at <http://road2ca.com/submit-a-quilt.html>. The entry deadline is October 2, 2019 so there is plenty of time. This is our local big time show and it would be great to see some work from our members. You'll never have a quilt hanging there if you don't enter!

Excellence in Fibers V, Muskegon, MI December 12, 2019 – March 15, 2020 +Publication <http://www.fiberartnowentry.com/> Entry Deadline, September 10, 2019

Craft Forms 2019 Int'l Juried Exhibition Of Contemporary Fine Craft (Wayne, PA) Nov 18, 2019 – Feb 1, 2020 <http://www.craftformsentry.org> Entry deadline September 15, 2019

Road to California, Ontario, CA. January 23 - 26, 2020.

<http://road2ca.com/submit-a-quilt.html>.

Entry Deadline October 2, 2019.

Between The Threads, Webster Arts, St. Louis MO. <https://www.webster-arts.org/between-the-threads-call-for-art> Entry Deadline October 11, 2019

Art Quilt Elements 2020, Wayne, PA. March 29 – May 2, 2020

<http://www.artquilelements.org>

Entry Deadline, October 13, 2019

AQS Quilt Week Daytona, <http://www.quiltweek.com/contest/>

Entry Deadline October 18, 2019

Challenge 2020: Honoring Road to California, Southern California Council of Quilt Guilds is accepting entries for an exhibit at Road to California, January 23 - 26, 2020. Exhibit entries are limited to SCCQG members of Member Guilds or Affiliate Members only. For its 25th Anniversary Road to California is challenging local guilds members to create a quilt that is inspired by this wonderful quilt festival and features a technique that was learned in a Road to California workshop or uses a pattern/book and/or fabric purchased from a vendor at Road to California during the years 1995 – 2019. Entry form: https://media.rainpos.com/5738/2020_entry_form_road_to_ca.pdf
Entry Deadline November 1, 2019

Questions? Contact Sally Wright at sally@sallywrightquilts.com



San Diego Quilt Show 2019 Winning Quilts...



Call for Quilts SCCQG's.....

Challenge 2020: Honoring Road to California

Southern California Council of Quilt Guilds is accepting entries for an exhibit at Road to California, January 23 - 26, 2020. Exhibit entries are limited to SCCQG members of Member Guilds or Affiliate Members only. *(All Westside Quilter members are automatically SCCQG members).*

Road to California is celebrating its 25th Anniversary in 2020. You are challenged to create a quilt that is inspired by this wonderful quilt festival and features a technique that was learned in a Road to California workshop or uses a pattern/book and/or fabric purchased from a vendor at Road to California during the years 1995 – 2019.

The challenge quilts must be made during 2019. They must also be created by the exhibitor but may be quilted by another person.

Entry requirements are as follows (please read carefully):

- The entry must have been made and finished in 2019 and be in excellent condition.
- Entry forms are available at www.sccqg.org
- The entry form must be filled out completely and must be postmarked by November 1, 2019.
- Entry forms must include a stamped, self-addressed business-size envelope.
- Entry forms must also include two 4"x6" (only) color pictures (both the full quilt and a detailed close-up) with the following information on the back of each photo: title of quilt and your name.

Questions may be emailed to quiltwizard1024@gmail.com

Quilt Dimensions (W) 32" X (H) 36": All quilts must be of the exact dimensions.

Your quilt needs to have a four-inch sleeve attached to the top back of the quilt. A label must be on the lower right corner backside of your quilt that includes the name of the quilt, your name, and address.

Entries missing any of the above will be eliminated from consideration.

Time Table

November 1, 2019

Entry form, pictures, self-addressed stamped envelope must be received or postmarked no later than Thursday, November 1, 2019. Photographs will not be returned for any of the entries.

December 1, 2018

Notification letters will be mailed by this date. Accepted entries will receive instructions for quilt shipment.

January 13, 2019

Accepted quilts must be received by Southern California Council of Quilt Guilds for exhibition. Quilts may not arrive before January 13, 2020 nor later than January 17, 2020.

January 23-26, 2019

Quilts will be displayed as part of the **Honoring Road to California Quilt Exhibit** at Road to California, Ontario Convention Center, Ontario, California. **January 29, 2019 to February 1, 2020**
Quilts will be shipped/returned to participants.



Challenge 2020: Honoring Road to California Entry Form

Name of Maker Quilted By

Address City/State/Zip Code

Phone Number Home/Cell e-mail address

Member of Quilt Guild(s)

Quilt Name **Quilt Dimensions (W) 32" X (H) 36"**

Brief Description of quilt for show signage

Inspiration for this quilt featuring a technique that was learned in a workshop (workshop title, teacher), using a pattern/book (name of pattern/book title, author, publisher, project title), and /or a fabric purchased from a vendor at Road to California during the years 1995 – 2020.

Please mail your entry form (one per person), two (2) photographs (full view and close-up), and self-addressed stamped envelope to:

**Stephania Bommarito
18924 Patronella Avenue
Torrance, CA 90504**

Entry must be postmarked by November 1, 2018

Keep a copy of this form for your records!



Note: Go to SCCQG website for official form with fillable fields.



A NEIGHBORLY GUILD CALENDAR

September 2019

September 7 Westside Quilters www.WestsideQuiltersLosAngeles.org	Mary Tabar Workshop: 'Water Color Strip Quilt'
September 9 LA Modern Quilt Guild www.lamqg.blogspot.com	<u>Meeting</u> - 2 nd Monday of the month
September 11 Simi Valley Quilt Guild www.simivalleyquiltguild.org	Pat Blair, Program : <i>A Painted Path to Quilting</i>
September 11 & 14 Glendale Quilt Guild www.glendalequiltguild.org	<u>Cathy Perlmutter</u> Program: Cityscapes <u>Alice Smith</u> Workshop: Landscapes in a Day
September 21 South Bay Quilters Guild www.southbayquiltersguild.org	High Tea, Talk on Hats, Fashion Show, and Celebration of our Guild's 40th Anniversary
September Santa Monica Quilt Guild www.santamonicaquiltguild.org	<u>Lujean Seagal</u> Lecture https://lujeanquilt.com/
September 21 African American Quilters of Los Angeles www.easysit.com/aaqla	<u>Meeting</u> 3 rd Sunday of every month
October 2019	
October 2 Santa Monica Quilt Guild www.santamonicaquiltguild.org	Tiffany Hayes
October 9 Orange County Quilters Guild www.orangecountyquiltersguild.com	<u>Rami Kim</u> Workshop: <i>Octagon Play</i>
October 9 Simi Valley Quilt Guild www.simivalleyquiltguild.org	<u>Susan Wade</u> , Program: <i>An Artistic Journey</i>
October 14 San Fernando Valley Quilt Association www.sfvqa.net	Program: Open 'Sewcial '
October 14 LA Modern Quilt Guild www.lamqg.blogspot.com	<u>Meeting</u> - 2 nd Monday of the month
October 16 Glendale Quilt Guild www.glendalequiltingguild.org	<u>Paula Reed</u> Program: The 10 Commandments of Successful Machine Quilting
October 16 South Bay Quilters Guild www.southbayquiltersguild.org	<u>Kimberly Einmo</u> Workshop: Kimberly's most popular class using 2 1/2" strips
October 18 & 19 Westside Quilters www.WestsideQuiltersLosAngeles.org	Cindy Grisdel Program: "Playing with Color" Workshop: "Artful Improv"
October 20 African American Quilters of Los Angeles www.easysite.com/aaqla	<u>Meeting</u> - third Sunday of the month

OUT AND ABOUT

- ✂ **Quilts On The Wall** – ‘Fabric of Nature’ Quilt Show Now through September 28, 2019. Mon, Wed & Fri, 11am – 2pm Greenly Art Space 2698 Junipero Ave, #113 Signal Hill, CA 90755 www.GreenlyArtSpace.org
- ✂ **Laundry Basket Quilts Retreat with Edyta Sitar** in Oxnard, CA September 19-22, 2019 This retreat will be full of fun quilting activities, from classes to schoolhouses, to trunk shows to make and take. The link below explains more about the retreat and starts the application process. <https://www.laundrybasketquilts.com/online-shop.html?store-page=2019-Retreat-c35588113>
www.laundrybasketquilts.com
- ✂ **South Bay Quilt Guild:** “High Tea, Talk on Hats, Fashion Show, and Celebration of Guild’s 40th Anniversary” September 21, 2019 at 11:30 am contact Carollee Schuegraf, 310.265.9796 or schuegraf@gmail.com for details
- ✂ The 5th **Annual Orange County Quilt, Craft & Sewing Festival** will be held at the OC Fair & Event Center - October 3 - 5, 2019. 10:00 am - 5:00 pm Thursday & Friday, 10:00am - 4:00 pm Saturday Admission is Free <https://quiltcraftsew.com/newsletter-guild-orange.html>
- ✂ **Kohn Gallery** on N Highland in Hollywood - **Maria Berrio** mixed-media artworks on canvas <https://www.studios-efanyc.org/maria-berrio>
<http://www.artnews.com/2019/03/13/kohn-gallery-represents-maria-berrio-to-roster/>
- ✂ **African American Quilter of Los Angeles** Quilt Show November 2, 2019

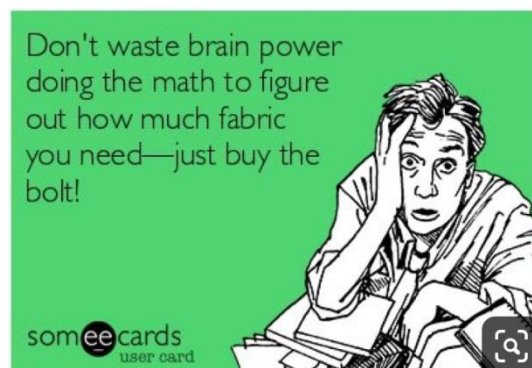
See the Speaker Calendar of the Southern California Council of Quilt Guilds for additional events. Go to www.sccqg.org scroll down to the bottom of the homepage and click on the box “Speakers” and see other SCCQG guilds and speakers into 2019.

Call for Help...

Janeen Obis is looking for help with making a special quilt. Janeen needs a quilter to make an art piece for her of my deceased husband's clothes. He died from lewy body dementia thus she wants the piece to be a branding for that dreadful disease.

Can you help her find someone that would be interested?

Janeen Obis
310 266 5993



Editor's Note:

I've been thinking about surface patterns lately and it's not for a quilt! We are redoing our driveway and walkway in the front of our home.

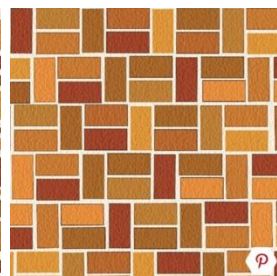
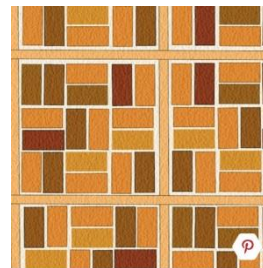
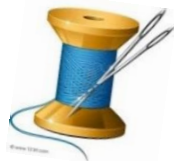
The walkway that leads from the driveway to the front door will be red brick and is my major focus. Just as in quilting, patterns have names: Jack on Jack, Half Basket Weave, Running Bond, Herringbone, Basket Weave, Stretcher Bond, Whorled, Grid, Pinwheel, and Diagonal Herringbone. Plus you can choose a border, sound familiar?

Of course, I'm over thinking this project like I've been known to do with a simple quilt. I keep telling myself planning this walkway is really like thinking I just got a new Jelly Roll (the brick width is set) and how am I going to cut it up and arrange it.

After the new walkway is in I may be inspired to make a quilt using one of the brick patterns. Wait, didn't Victoria Findlay Wolfe already make a fabulous herringbone quilt! Wonder if she has a new walkway also?

Happy Stitching,

Debbie Nussbaum
Newsletter Editor



First Day of Autumn September 23rd

Westside Quilters - Quarterly Meeting - August 10, 2019

President: Roberta Walley opened Westside Quilters' August meeting by welcoming everyone to the meeting and commented that she was glad all found their way to the new room. She then asked any new members or visitors to introduce themselves.

Roberta asked for a motion to accept the minutes of WQ's May 18, 2019 quarterly meeting, Sandy Ray moved to accept the minutes, Jennie Kraft seconded. It was approved on a voice vote.

Roberta then noted the success of the workshop with Esterita Austin on the previous day and how enjoyable it was for all attending. A discussion of the workshop followed.

Miscellaneous Presentation: Laurie Mutalipassi from Quilts on the Wall, invited everyone to visit their exhibit, "Fabric of Nature" at the Greenly Art Space in Signal Hill. The exhibit runs from August 24-September 28 and features some of the quilts from the group's challenge "Spotted in My Garden". Quilts on the Wall is a group of textile artists who make art quilts and meet monthly in Seal Beach. More information at www.quiltsonthewall.com.

Membership: Luann reported that membership is increasing and a new roster will be available soon.

Treasury: Karynn commented that the treasury is in good shape.

Philanthropy: Lisa showed the strip set for WQ's philanthropy project. It is a 7"x20" strip set that can be made with strips of any width. The sets will be sewn together at the November 9 Philanthropy Day. She also mentioned that the annual fabric sale will be at the next quarterly meeting on October 19 at St. Andrew's Lutheran church.

Show and Tell Quilts: Members showed the following quilts: Sally Wright - Mont St. Michel quilt, Philanthropy strip sets, sample of Cindy Grisdela's class, sample from 2 of Esterita Austin's classes; Pat Karasick - vintage quilt top she quilted; Marianne Simpson - Elizabeth Hartmann swan quilt wedding gift; Toni Glick - scrappy nest quilt; Nancy Sharpe - Sunrise on Kauai; Nancy King - wedding quilt; Laurie Mutalipassi - sheer wine goblets; Allison Leong - folklore embroidery panel quilt, baby quilt, purple scrap quilt, 2nd scrap quilt; Cindi Garacochea - Bob's quilt (t-shirts), Mad for Plaid, embroidery sampler, Kaffe Fassett quilt; Debbie Nussbaum - Beach Day umbrellas (from WQ class last year), circles challenge table runner; Sherry Kleinman - Spoonflower fabric designs and projects made from these fabrics; Maureen Gardner - Christmas Rose; Vicki Bohnhoff - cushion top; Roberta Walley - self portrait.

Featured Speaker: Art quilter Esterita Austin's enjoyable talk "Classic Rock" covered her journey in quilting from age 22 when she met a woman in Greece working on a Grandmother's Flower Garden quilt using Liberty fabrics to her first baby quilt (which has since appeared in her son's paintings) to teaching to the present day. As Esterita began quilting seriously she became interested in depth on the quilt surface, perspective, the source of light portrayed in the quilt and reversing lights and darks. Churches, abbeys and nature including rocks and stones all became sources of inspiration. She started adding paint to her quilts to bring out the depth of her subjects and during this period won a competition at the Folk Art Museum in New York City. Portraiture then became an interest and she showed slides of several of her quilts. One of the techniques she is excited about now is using Misty Fuse, organza and paint to transfer her art to fabric. The previous day's workshop used this technique. Esterita then showed everyone her series of old abandoned cars, each with individual personalities peaking through the rust. A show and tell ended the presentation which included car logos of classic cars in a small format.

Meeting adjourned at 12:00.

Respectfully submitted,

Terrie Dorio
Recording Secretary

...



